

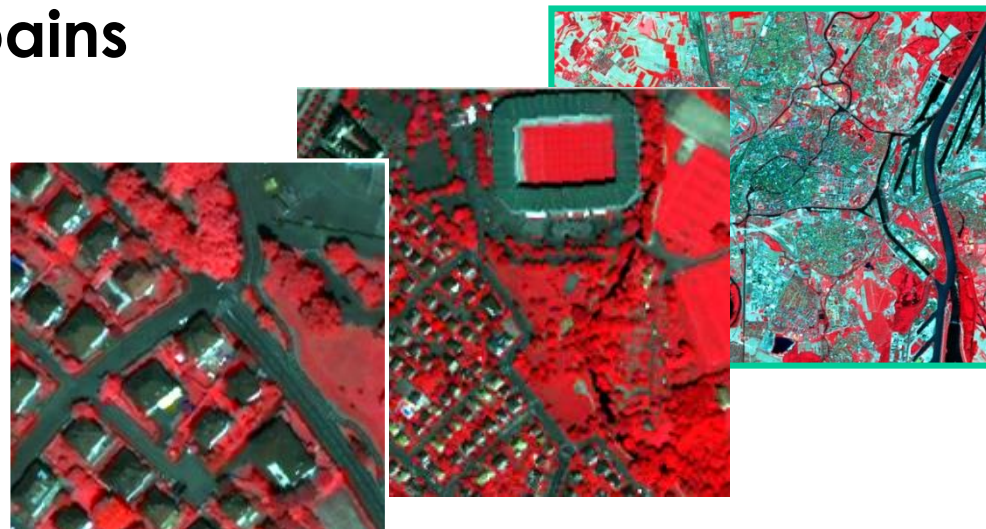
La télédétection pour cartographier et mesurer l'évolution de l'occupation des sols et des ressources naturelles

Exemple des espaces urbains

Anne Puissant – LIVE

avec des contributions de :

F. Guttler, S. Rougier, Q. Poterek,
G. Skupinski

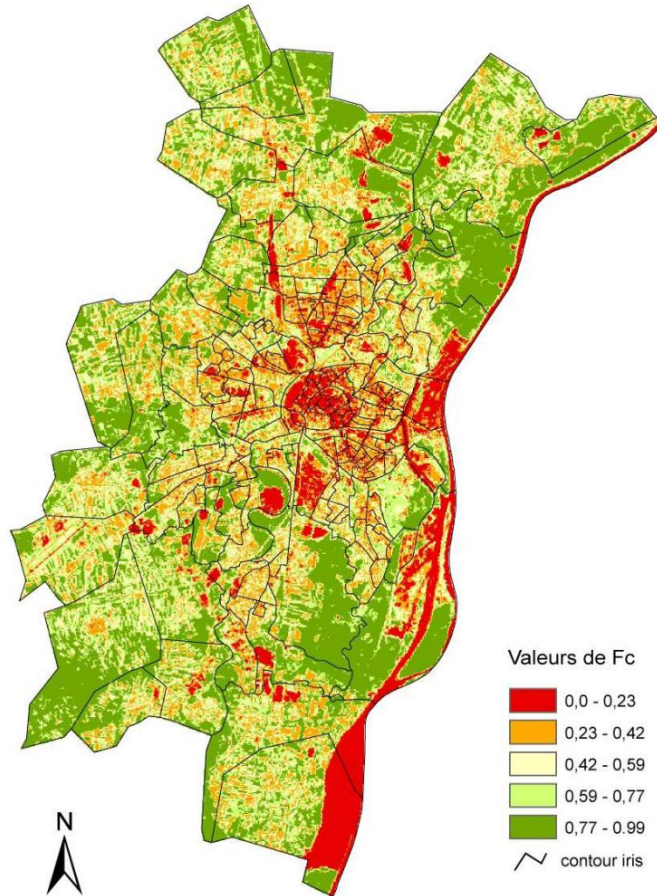


A partir des images satellites optiques HRS

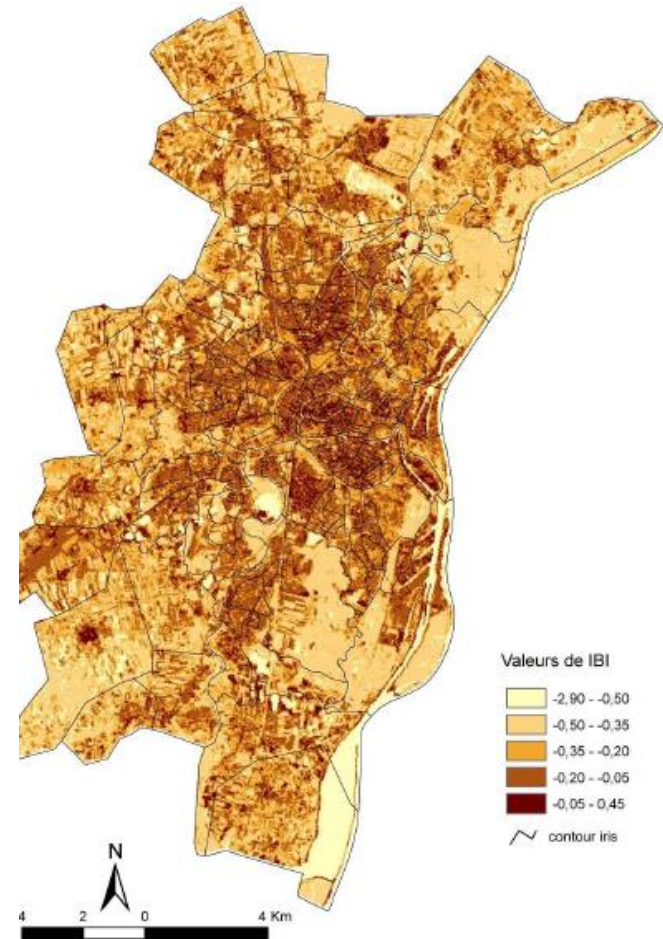
- Des indicateurs 'biophysiques' de l'état des surfaces

1/25 000 – 1/50 000

Végétation

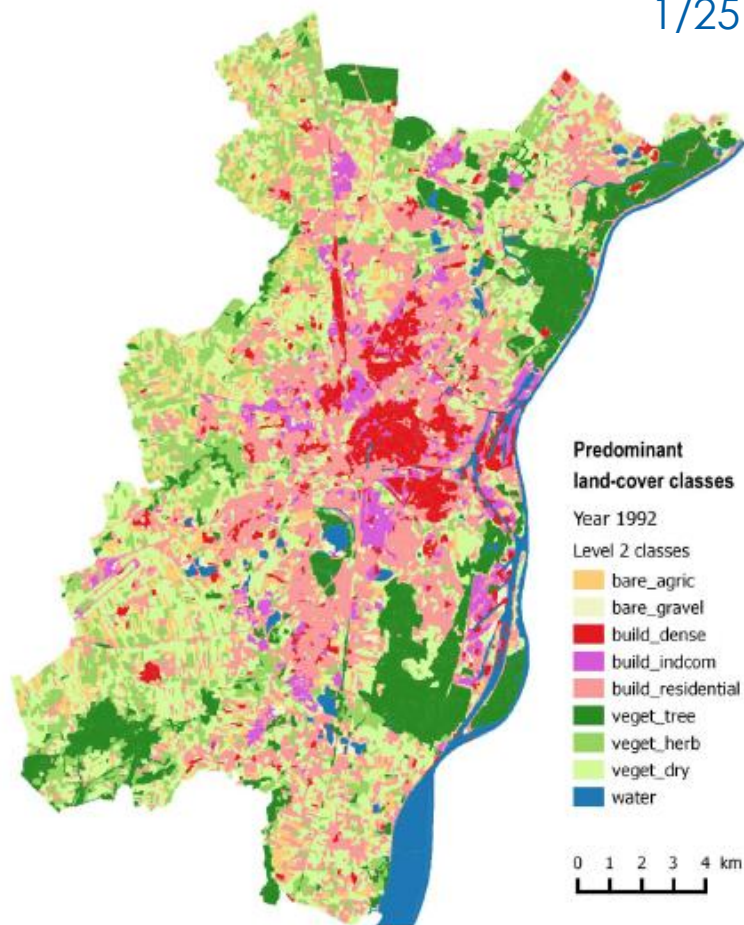


Imperméabilisation

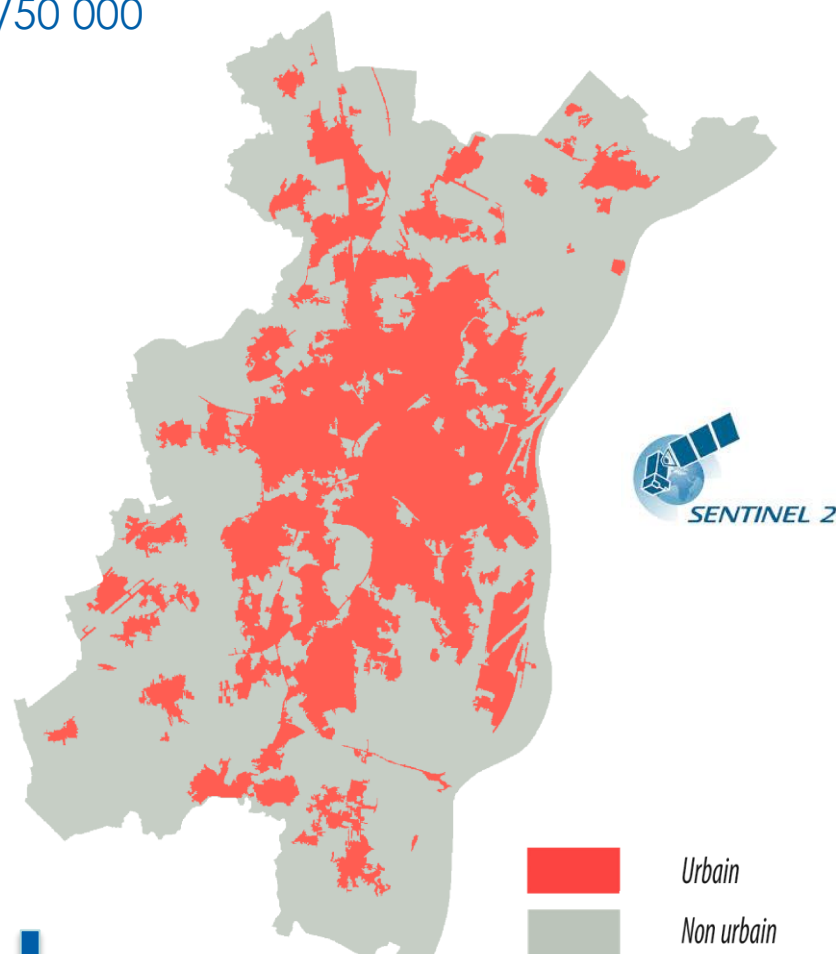
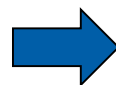


A partir des images satellites optiques HRS

- Une cartographie de l'occupation des sols / des surfaces artificialisées
1/25 000 – 1/50 000



CES Occupation des sols

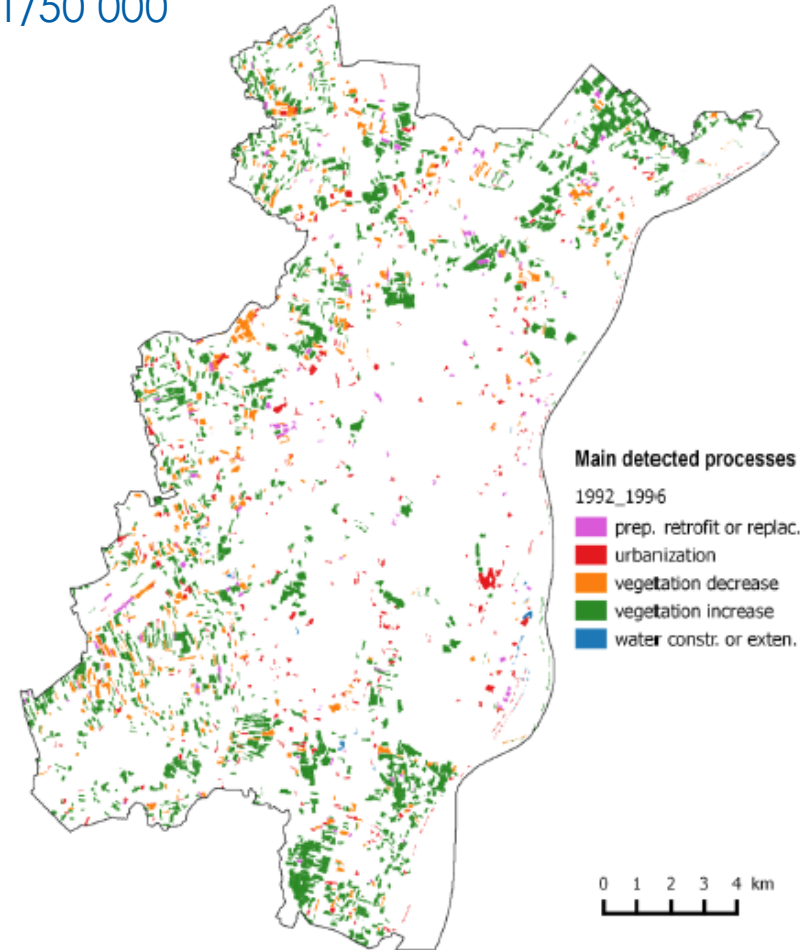
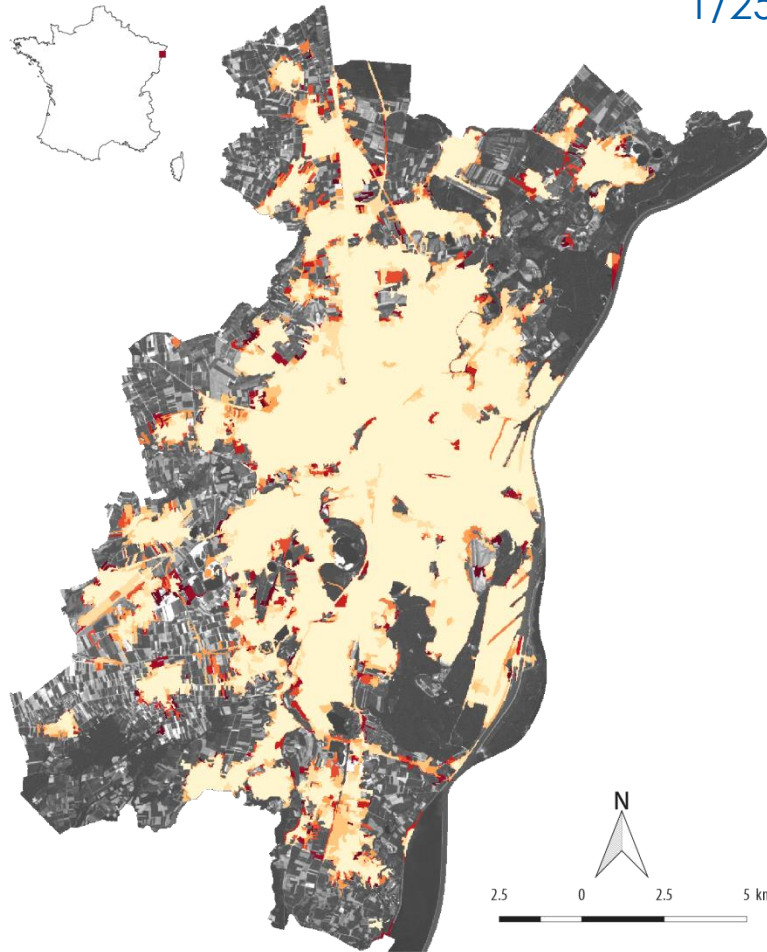


CES Artificialisation / urbanisation

A partir des images satellites optiques HRS

- La quantification de l'artificialisation / l'identification des processus

1/25 000 – 1/50 000



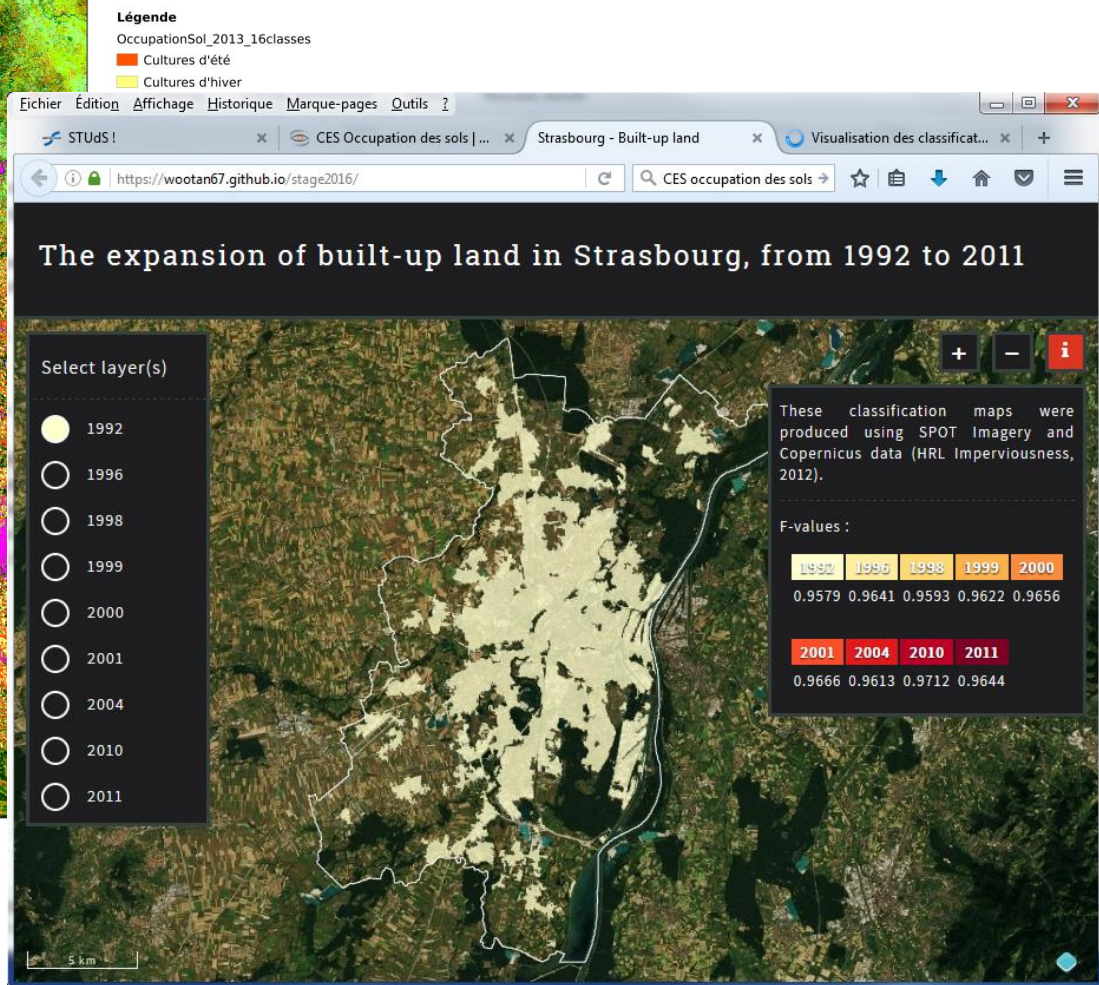
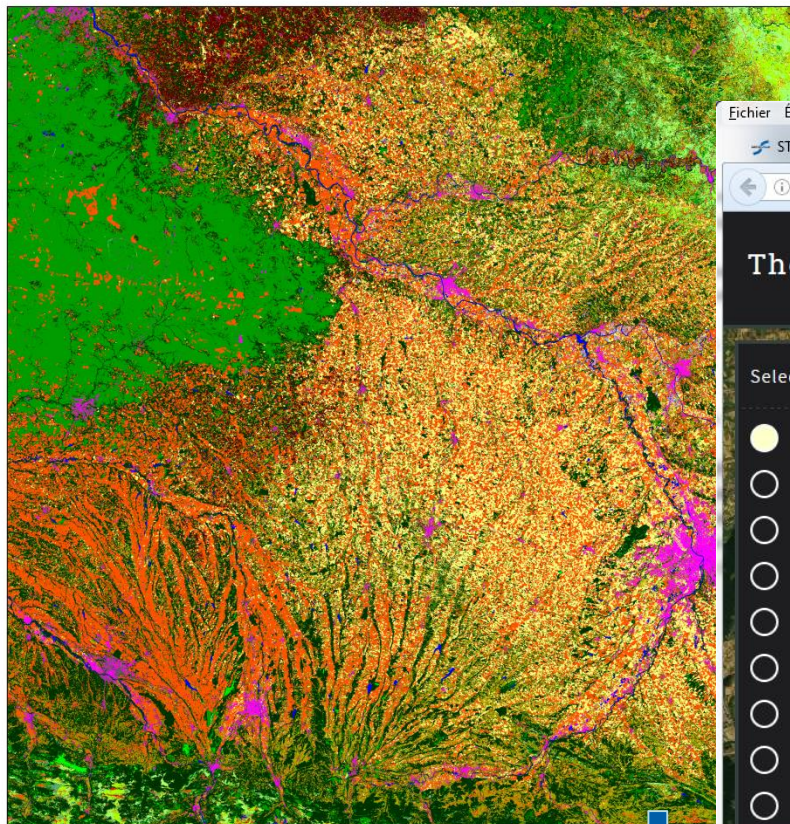
Main detected processes

1992_1996

- prep. retrofit or replac.
- urbanization
- vegetation decrease
- vegetation increase
- water constr. or exten.



Vers la mise à disposition de 'produits'



CES Occupation des sols
Production : France entière

http://www.cesbio.ups-tlse.fr/multitemp/wp-content/uploads/2016/02/SudOuestMosaic_France2014_V1_ColorIndexedT.html

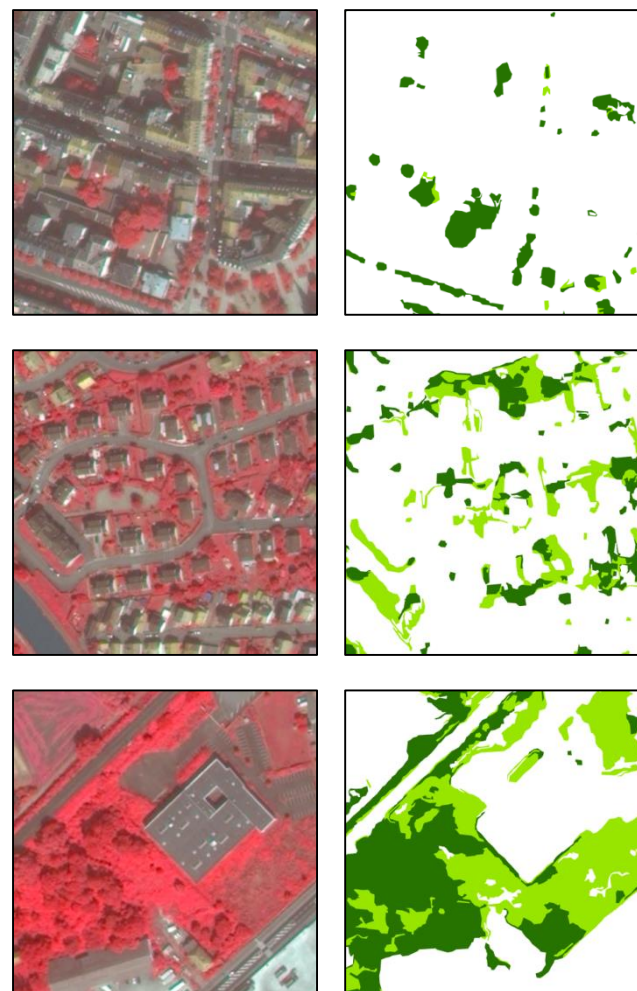
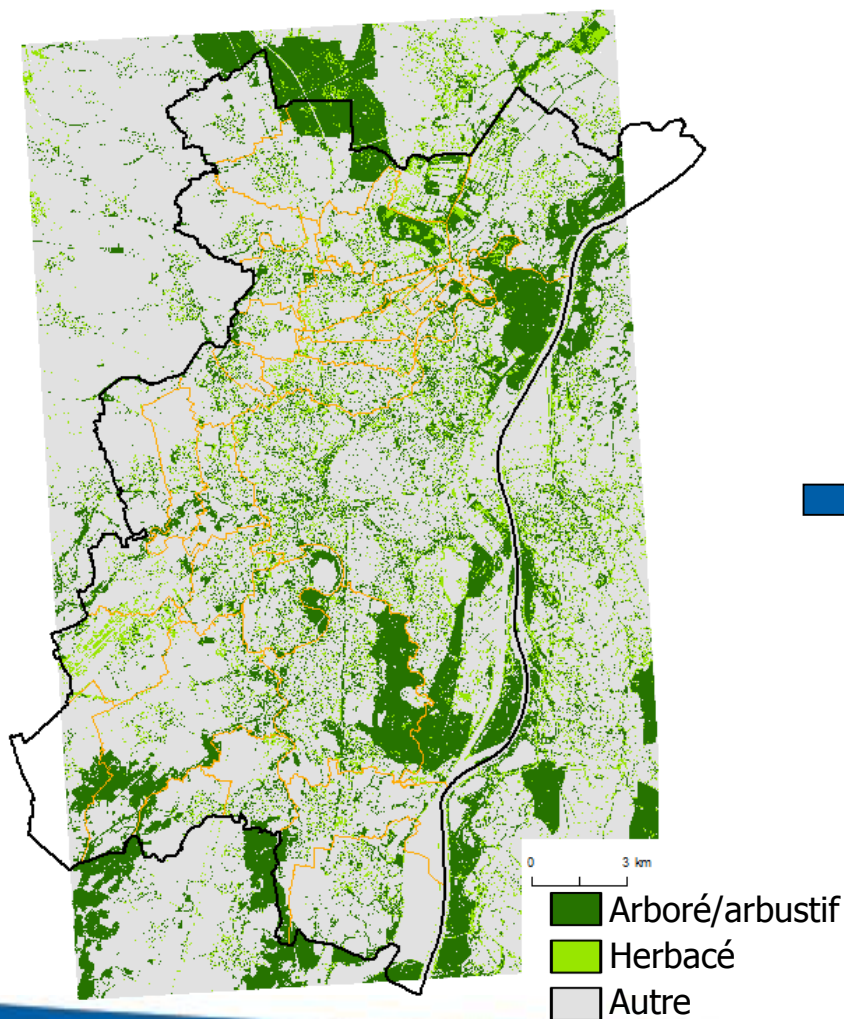


CES Artificialisation / urbanisation
Prototype SPOT-S2 / en développement



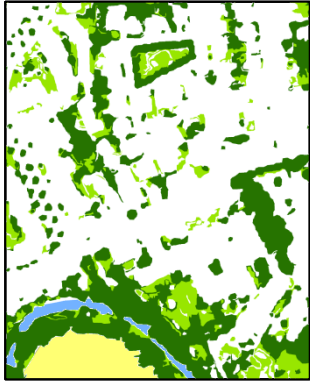
A partir des images satellites optiques THRS

- Une cartographie fine de la trame verte (1/5 000 – 1/10 000)



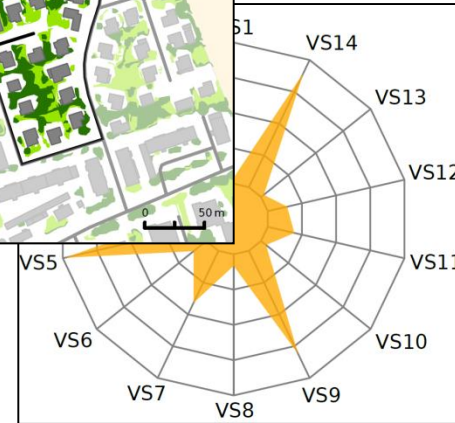
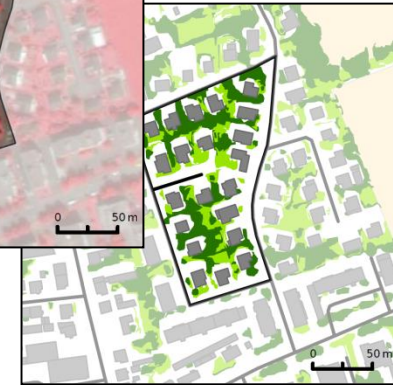
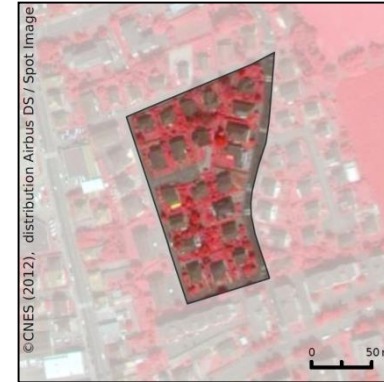
Combinaison avec des données exogènes

Trame verte

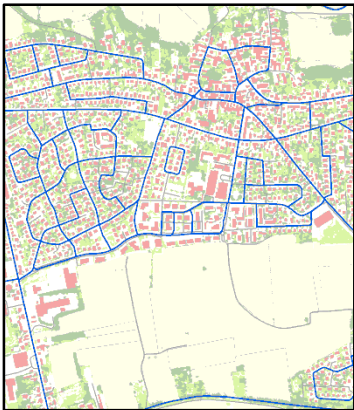


+

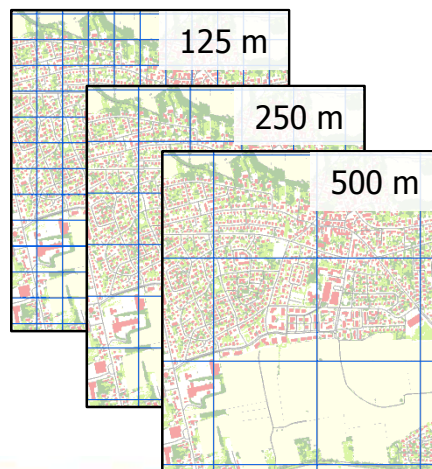
Trame grise



Îlot



Grille carrée



- Indicateurs paysagers (fragmentation / connectivité)
- Données d'entrée dans modèle (climatologie urbaine)